


An aerial photograph of a residential neighborhood. The image shows several houses with different roof colors, including red, brown, and grey. There are green lawns, trees, and a paved road. A black rectangular box is overlaid on the right side of the image, containing white text. In the bottom left corner, there are decorative orange and yellow shapes.

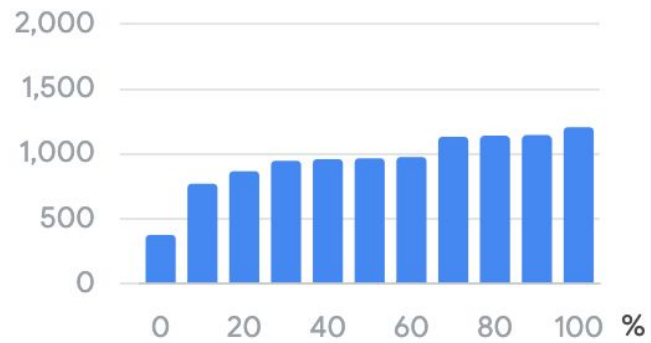
Google's new Solar API

Maximum Solar Potential

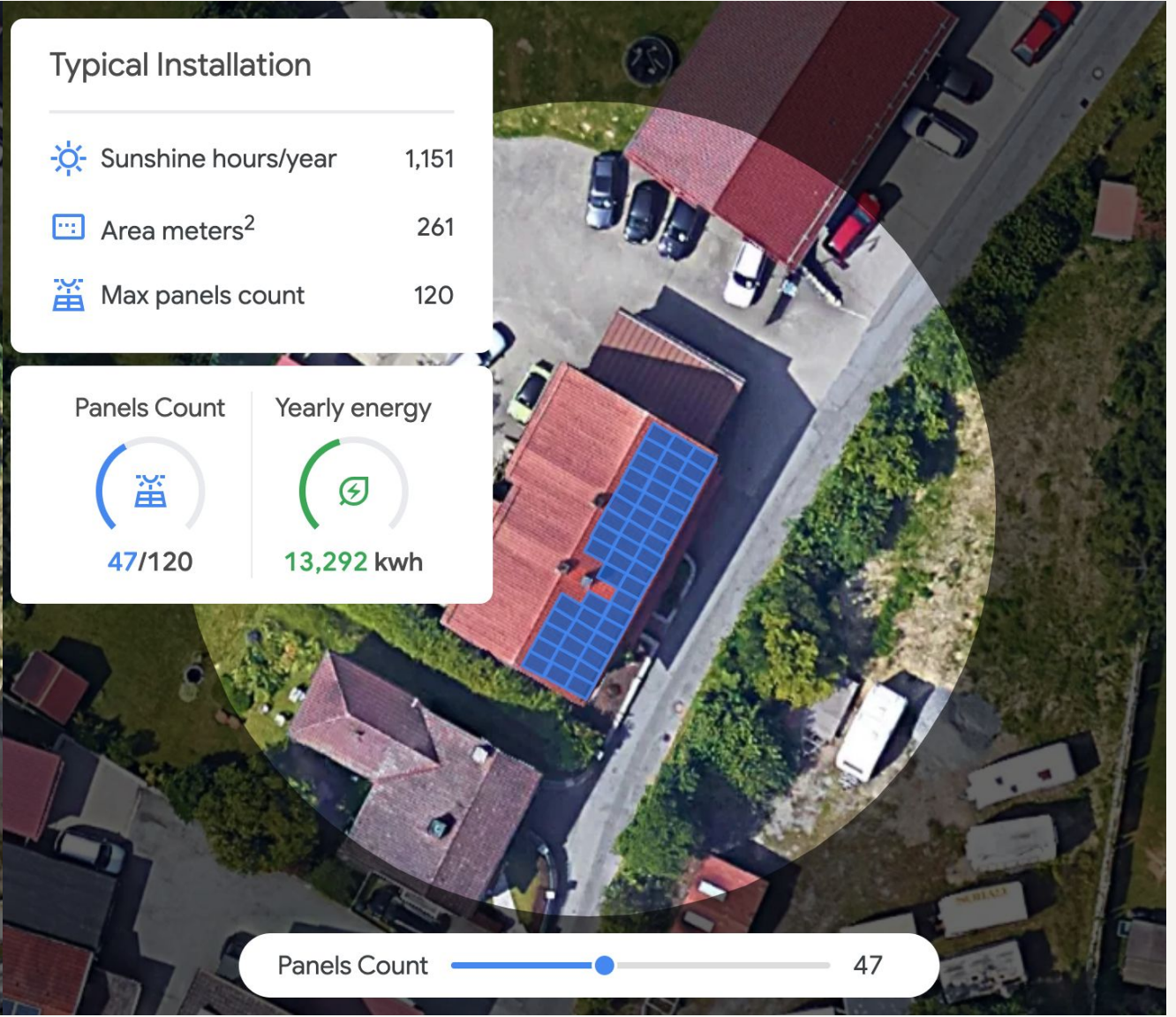
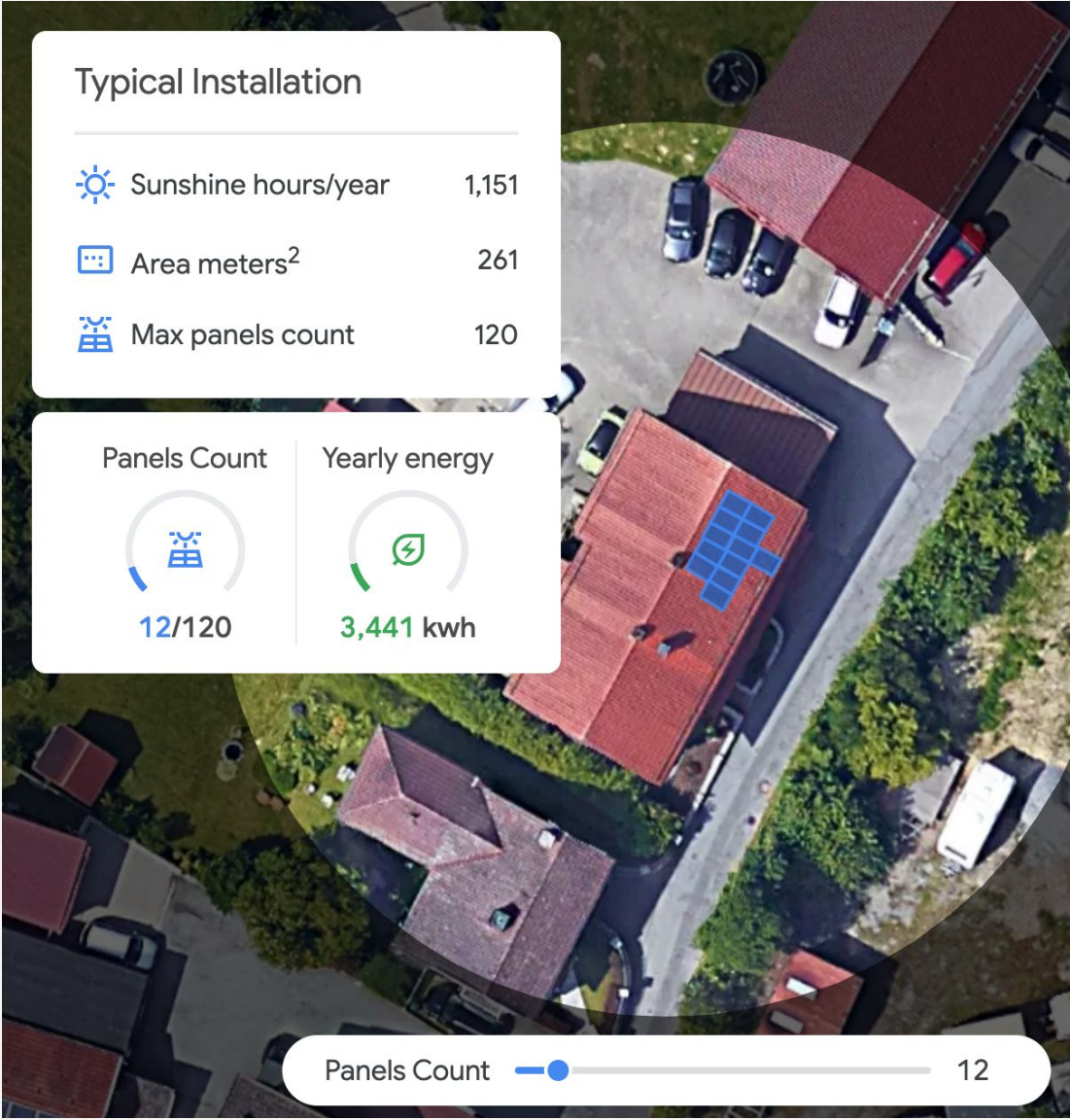
 Sunshine hours/year	1,151
 Area meters ²	261
 Max panels count	120

Sunniness over roof area

kWh/kW



<https://storage.googleapis.com/gmp-maps-demos/solar/index.html>



<https://solar.googleapis.com/v1/buildingInsights:findClosest?>

location.latitude=37.4450&location.longitude=-122.1390

```
{
  "name": "buildings/ChIJh0CMPQW7j4ARLrRiVvmg6Vs",
  "center": {
    "latitude": 37.4449439,
    "longitude": -122.13911639999999
  },
  "imageryDate": {
    "year": 2018,
    "month": 6,
    "day": 4
  },
  "postalCode": "94303",
  "administrativeArea": "CA",
  "statisticalArea": "06085511100",
  "regionCode": "US",
  "solarPotential": {
    "maxArrayPanelsCount": 1373,
    "maxArrayAreaMeters2": 2247.3264,
    "maxSunshineHoursPerYear": 1809.6869,
  }
}
```

Applications:

Quick assessments

Self assessment?

Design support

Could be an input to regional
assessment tools

Partial solution to licencing
issues

